

Flowfast Rapid Transit SR



Description

Flowfast Rapid Transit SR is a fast track and fire-safe acrylic resin based flooring system containing natural quartz aggregates. The system offers a joint-free and positively textured coloured floor finish with exceptional chemical, wear and slip resistance.

Uses

The system is ideal for use in areas subject to high foot and vehicular traffic where health, hygiene & fire-safety are paramount, particularly underground rail networks, warehousing and storage facilities, hospitals, health institutions and washroom areas as well as food manufacturing and processing units.

Benefits:

- Fast curing and rapid installation
- Good impact resistance
- Seamless and hygienic finish
- Exceptional wear resistance
- Easy to clean and maintain
- High scratch resistance
- High chemical resistance
- Wear resistant surface for wheeled traffic
- Fire resistant to L.U.L. Section 12 usage
- Excellent resistance to UV light

Standard Colour Chart



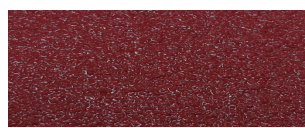
Signal Yellow



Sky Blue



Forest Green



Tile Red



Goosewing Grey



Mid Grey



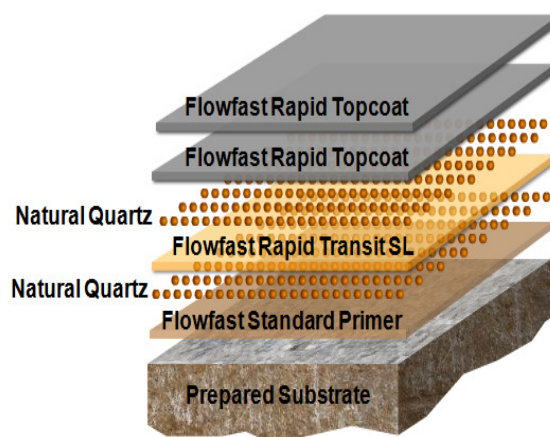
Dark Grey



Black

The applied colours may differ slightly from the examples shown above. Contact our customer services for a true colour sample or a special colour match.

System Design



Model Specification

Product: Flowfast Rapid Transit SR
Finish: Satin
Thickness: Dependant on specification
Colour: _____
Manufacturer: Flowcrete India Pvt Ltd
Telephone: Customer Service - +91 44 4202 9831
Preparatory work and application in accordance with manufacturer's instructions.

Substrate Requirements

Concrete or screed substrate should be a minimum of 25N/mm², free from laitance, dust and other contamination. The substrate should be dry upto 95% RH as per BS8204 and free from rising damp and ground water pressure. A special Flowfast primer can be used for substrates up to 100% RH (surface dry).

Products Included in this System

Flowfast Standard Primer
Natural Quartz 0.4-0.8mm
Flowfast Rapid Transit SL
Natural Quartz 0.4-0.8mm
Flowfast Rapid Transit Sealer

Consult individual Product Data sheets for information on Flowfast Catalyst levels.

Detailed application instructions are available upon request.

Installation Service

The installation should be carried out by a Flowcrete approved applicator with a documented quality assurance scheme. Obtain details of our approved contractors by contacting our customer service team or enquiring via our web site at www.flowcrete.in.

Environmental Considerations

The finished system is assessed as non-hazardous to health and the environment. The long service life and seamless surface reduce the need for repairs, maintenance and cleaning. Environmental and health considerations are controlled during the manufacture and application of the products by Flowcrete staff and fully trained and experienced contractors.

Focus on the Floorzone

Flowcrete India Pvt Ltd is a division of the Flowcrete Group, world leaders in specialist industrial and commercial flooring. Systems available include: underfloor heating systems, floor screeds, surface damp proof membranes, decorative floor finishes, seamless terrazzo, car park deck waterproofing and corrosion protection systems... to name just a few. Our corporate objective is to satisfy your flooring needs.

Technical Information

The figures that follow are typical properties achieved in laboratory tests at 20 °C and at 50% Relative Humidity.

| | |
|-----------------|---|
| Fire Resistance | L.U.L. Section 12 |
| Slip Resistance | TRRL Pendulum Slip Test Dry >40 Wet depends on specification |

Textured systems are recommended to meet slip resistance value requirements for wet conditions and/or surface contaminants (wet or dry) - please contact our Technical Advisors for further details and specifications.

| | |
|------------------------|---|
| Temperature Resistance | Tolerant of sustained temperatures up to 50°C |
| Water Permeability | Nil – Karsten Test (impermeable) |
| Chemical Resistance | Contact Technical Department Good resistance to tea, coffee, cola, fruit juice, soaps and bleach. |
| Compressive Strength | > 40N/mm² |
| Flexural Strength | > 20N/mm² |
| Bond Strength | Greater than cohesive strength of 25 N/mm ² concrete. > 1.5 MPa. |

Complies with BS 8204-6/FeRFA type 4.

Speed of Cure (per coat)

| | |
|--------------------|---------|
| Full traffic | 1 hour |
| Full chemical cure | 2 hours |

Cure at ambient temperatures in the range 0°C to 30°C can be achieved by altering the quantity of catalyst used. For applications below 0°C, please consult our Technical Department.

Aftercare - Cleaning and Maintenance

Clean floors regularly using a rotary scrubber in conjunction with a mildly alkaline detergent (without solvent).

Important Note

Flowcrete's products are guaranteed against defective materials and manufacture and are sold subject to its standard Terms and Conditions of Sale, copies of which can be obtained on request.

Further Information

To ensure you are specifying a fit for purpose flooring system for your project please consult our Technical Advisors on the number below or visit our website to register your interest in specifying one of the most durable floors on the market.