

Flowshield Quartz (2-3 mm)



Description

Decorative, hard-wearing, self-smoothing “liquid-vinyl” epoxy resin flooring system.

Typical Uses

Dry, light industrial, commercial and institutional floors requiring a decorative but durable industrial floor performance. Typical uses include laboratories, showrooms, retail outlets, hospitals, healthcare centres, schools and offices.

Benefits

- Highly decorative; enhances working environment
- Solvent free
- Excellent scratch resistance
- Hygienic and easy to clean
- Non-tainting and non-dusting
- Hard-wearing
- Abrasion resistant
- High chemical resistance
- Decorative finish in single application

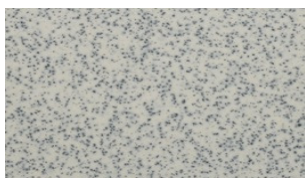
Project References

Swedish Motor Assembly S/B; Flavour Inn S/B; B.Food; Aroma; Reuxell; B & Q Hong Kong; Wyeth Singapore.

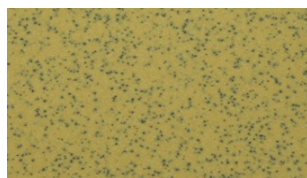
System Design



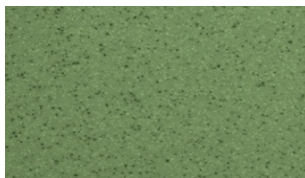
Standard Colour Chart



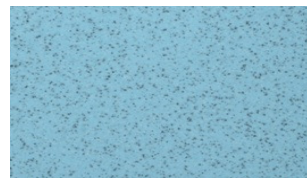
Off White



Cream



Pastel Green



Light Blue



Goosewing Grey

The applied colours may differ slightly from the examples shown above. Contact our customer services for a true colour sample or a special colour match.

Model Specification

Product: Flowshield Quartz
Finish: Satin
Thickness: 2-3 mm
Colour: _____
Manufacturer: Flowcrete India Pvt Ltd
Telephone: Customer Service - +91 44 4202 9831
Preparatory work and application in accordance with manufacturer's instructions.

Substrate Requirements

Concrete or screed substrate should be a minimum of 25N/ mm², free from laitance, dust and other contamination. The substrate should be dry upto 75%RH as per BS8204 and free from rising damp and ground water pressure. To produce the required aesthetic effect, a smooth, level substrate is required. Contact Flowcrete for more advice.

Products Included in this System

Flowprime /Scratch Coat
Flowshield Quartz

Detailed application instructions are available upon request.

Installation Service

The installation should be carried out by a Flowcrete approved applicator with a documented quality assurance scheme. Obtain details of our approved contractors by contacting our customer service team or enquiring via our web site at www.flowcrete.in.

Environmental Considerations

The finished system is assessed as non-hazardous to health and the environment. The long service life and seamless surface reduce the need for repairs, maintenance and cleaning. Environmental and health considerations are controlled during the manufacture and application of the products by Flowcrete staff and fully trained and experienced contractors.

Focus on the Floorzone

Flowcrete India Pvt Ltd is a division of the Flowcrete Group, world leaders in specialist industrial and commercial flooring. Systems available include: underfloor heating systems, floor screeds, surface damp proof membranes, decorative floor finishes, seamless terrazzo, car park deck waterproofing and corrosion protection systems... to name just a few. Our corporate objective is to satisfy your flooring needs.

Technical Information

The figures that follow are typical properties achieved in laboratory tests at 20 °C and at 50% Relative Humidity.

Fire Resistance	BS476:Part 7 Surface spread of flame: Class 2 (indicative)
Slip Resistance Value (SRV)	Method described in BS 7976-2 Dry 67 (typical values for 4-S rubber slider)
Thermal Resistance	Tolerant up to 60 °C
Water Permeability	Nil – Karsten test (impermeable)
Vapour Permeability	4 gms / m² / mm / 24 hours
Surface Hardness	180 secs. Koenig Hardness Test
Chemical Resistance	Contact Technical Department
Abrasion Resistance	Taber Abrader: 90 mg loss per 1000 cycles (1 kg load using CS17 wheels)
Compressive Strength	>60 N/mm² (BS6319)
Flexural Strength	>40 N/mm² (BS6319)
Tensile Strength	>15 N/mm² (BS6319)
Bond Strength	Greater than cohesive strength of 25 N/mm ² concrete. > 1.5 MPa.
Toxicity	Taint free to sensitive foodstuffs.

Speed of Cure

	10°C	20°C	30°C
Light traffic	36 hrs	28 hrs	24 hrs
Full traffic	72 hrs	48 hrs	36 hrs
Full chemical cure	12 days	7 days	6 days

Aftercare - Cleaning and Maintenance

Clean regularly using a single or double headed rotary scrubber drier in conjunction with a mildly alkaline detergent.

Important Note

Flowcrete's products are guaranteed against defective materials and manufacture and are sold subject to its standard Terms and Conditions of Sale, copies of which can be obtained on request.

Further Information

To ensure you are specifying a fit for purpose flooring for your project please consult our Technical Advisors on the number below or visit our website to register your interest in specifying one of the most durable floors on the market.