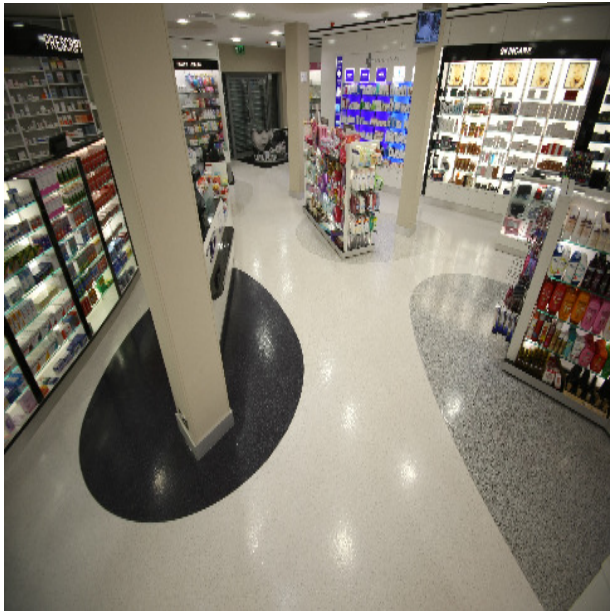


Flowfast Terrosso



Description

Flowfast Terrosso is a seamless, decorative, hard wearing, methyl methacrylate (MMA) resin floor finish, developed for high traffic retail or industrial environments.

Flowfast Terrosso has been developed to enable very fast track applications, therefore dramatically reducing down time.

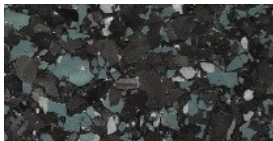
Uses

Ideal for public areas, shops, showrooms, department stores, designer outlets, restaurants, garden centres, schools, airports, hospitals, stadiums and industrial buildings where time for floor repairing and resurfacing is limited.

Benefits:

- Fast curing and rapid installation
- Can be overlaid onto existing ceramic tiles, marble, granite, terrazzo or timber floors
- Attractive decorative finish
- Extensive design potential
- Seamless and hygienic finish
- High chemical resistance
- High scratch resistance
- Wear resistant surface for wheeled traffic
- Easy to clean and maintain

Standard Colour Chart



Black Granite



Glacier



Freckle



Frosty



Grey Granite



Moonlite



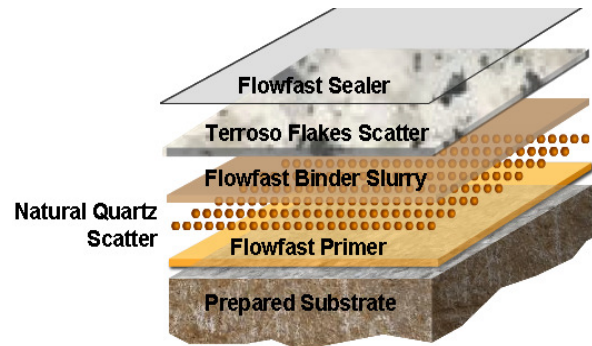
Oyster



Storm

The applied colours may differ slightly from the examples shown above. Contact our customer services for a true colour sample or a special colour match.

System Design



Model Specification

Product: Flowfast Terroso system
Finish: Satin
Thickness: Dependant on specification
Manufacturer: Flowcrete India Pvt Ltd
Telephone: Customer service- +91 44 4202 9831
Preparatory work and application in accordance with manufacturer's instructions.

Substrate Requirements

Concrete or screed substrate should be a minimum of 25N/mm², free from laitance, dust and other contamination. The substrate should be dry to 95% RH as per BS8204 and free from rising damp and ground water pressure. A special Flowfast primer can be used for substrates up to 100% RH (surface dry).

Products Included in this System

Flowfast Standard Primer
Natural Quartz 0.4-0.8mm
Flowfast Standard Binder Slurry
Flowfast Terroso Flakes
Flowfast Standard Seal

Consult individual Product Data sheets for information on Flowfast Catalyst levels.

Graded aggregate can be incorporated in the sealer to provide better slip resistance.

Detailed application instructions are available upon request.

Installation Service

The installation should be carried out by a Flowcrete approved applicator with a documented quality assurance scheme. Obtain details of our approved contractors by contacting our customer service team or enquiring via our web site at www.flowcrete.in.

Environmental Considerations

The finished system is assessed as non-hazardous to health and the environment. The long service life and seamless surface reduce the need for repairs, maintenance and cleaning. Environmental and health considerations are controlled during manufacture and application of the products by Flowcrete staff and fully trained and experienced contractors.

Aftercare - Cleaning and Maintenance

Clean floors regularly using a rotary scrubber in conjunction with a mildly alkaline detergent (without solvent).

Important Note

Flowcrete's products are guaranteed against defective materials and manufacture and are sold subject to its standard Terms and Conditions of Sale, copies of which can be obtained on request.

Technical Information

The figures that follow are typical properties achieved in laboratory tests at 20 °C and at 50% Relative Humidity.

Fire Resistance	EN 13501-1 C _{FL} - s1
Slip Resistance	TRRL Pendulum Slip Test Dry >40 Wet depends on specification

Textured systems are recommended to meet slip resistance value requirements for wet conditions and/or surface contaminants (wet or dry) - please contact our Technical Advisors for further details and specifications

Impact Resistance	ISO6272 1 kg weight >1.8 m 2 kg weight >1.5 m
Abrasion Resistance	BS 8204-2 Class AR2 – Medium duty industrial and commercial.
Temperature Resistance	Tolerant of sustained temperatures up to 50°C
Water Permeability	Nil – Karsten Test (impermeable)
Chemical Resistance	Contact Technical Department Good resistance to tea, coffee, cola, fruit juice, soaps and bleach
Bond Strength	Greater than cohesive strength of 25 N/mm ² concrete. > 1.5 MPa.

Speed of Cure (per coat)

Full traffic	1 hour
Full chemical cure	1 hour

Cure at ambient temperatures in the range 0°C to 30°C can be achieved by altering the quantity of catalyst used. For applications below 0°C, please consult our Technical Department

Further Information

To ensure you are specifying a fit for purpose floor system for your project please consult our Technical Advisors on the number below or visit our website to register your interest in specifying one of the most durable floors on the market.