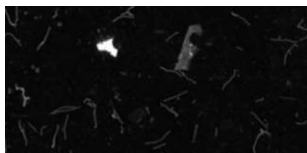


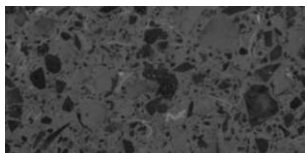
Mondéco Mirrazzo (7 mm)



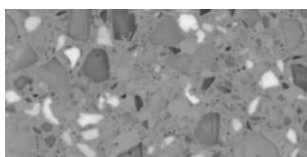
Standard Colour Chart



Black Diamond



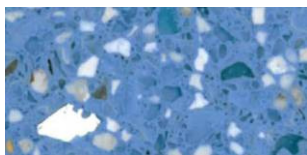
Graphite



Iron Ore



Peridot



Aquamarine

The applied colours may differ slightly from the examples shown above. Contact our customer services for a true colour sample or a special colour match.

Description

Mondéco Mirrazzo is a seamless epoxy resin terrazzo floor finish that utilises a blend of recycled crushed clear, coloured and mirror glass & metallic particles.

Uses

Mondéco Mirrazzo seamless terrazzo is suitable for airport and railway terminals, shopping centres, restaurants, hotels and environments where design aesthetics and durability are of paramount concern.

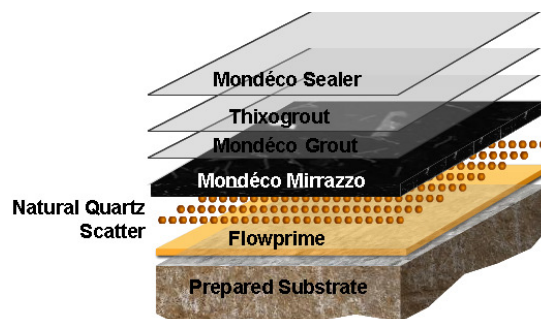
Benefits

- Aesthetically pleasing - enhances the working environment
- Solvent free, low odour
- Flexible design
- Seamless finish
- Easy to clean and maintain
- High abrasion resistance
- Long life span
- High chemical resistance
- Contains more than 50% recycled material

Project References

Basement Bar & Restaurant; Grand Canal Hotel; Garda Headquarters; Altnagelvin Hospital; Derry Co; Londonderry.

System Design



Model Specification

Product: Mondéco Mirrazzo
Finish: Satin
Thickness: 7 mm
Colour:
Manufacturer: Flowcrete India Pvt Ltd
Telephone: Customer Service - +91 44 4202 9831
Preparatory work and application in accordance with manufacturer's instructions.

Substrate Requirements

Concrete or screed substrate should be a minimum of 25 N/mm², free from laitance, dust and other contamination. Substrate should be dry upto 75% RH as per BS8204 and free from rising damp and ground water pressure. The level tolerance of the substrate should be to SR1.

Products Included in this System

Flowprime
Natural Quartz 8/16 Mesh Scatter
Mondéco Mirrazzo
(Applied at 8 mm, ground down to 7 mm)
Mondéco Grout
Thixogrout
Mondéco Sealer

Detailed application instructions are available upon request.

Installation Service

The installation should be carried out by a Flowcrete approved applicator with a documented quality assurance scheme. Obtain details of our approved contractors by contacting our customer service team or enquiring via our web site at www.flowcrete.in.

Environmental Considerations

The finished system is assessed as non-hazardous to health and the environment. The long service life and seamless surface reduce the need for repairs, maintenance and cleaning. Environmental and health considerations are controlled during the manufacture and application of the products by Flowcrete staff and fully trained and experienced contractors.

Focus on the Floorzone

Flowcrete India Pvt Ltd is a division of the Flowcrete Group, world leaders in specialist industrial and commercial flooring. Systems available include: underfloor heating systems, floor screeds, surface damp proof membranes, decorative floor finishes, seamless terrazzo, car park deck waterproofing and corrosion protection systems... to name just a few. Our corporate objective is to satisfy your flooring needs.

Technical Information

The figures that follow are typical properties achieved in laboratory tests at 20°C and at 50% Relative Humidity.

Fire Resistance	BS 476-7: Spread of Flame Class 2
Slip Resistance	TRRL Pendulum Slip Test Dry >40 low slip potential

Textured systems are recommended to meet slip resistance value requirements for wet conditions and/or surface contaminants (wet or dry) - please contact our Technical Advisors for further details and specifications.

Temperature Resistance	Tolerant of sustained temperatures up to 60°C
Water Permeability	Nil – Karsten test (impermeable)
Chemical Resistance	Consult Technical Department
Abrasion Resistance BS 8204-2	Grade AR2 – Medium duty Industrial and Commercial
Compressive Strength	> 55 N/mm² (BS 6319)
Flexural Strength	> 20 N/mm² (BS 6319)
Tensile Strength	> 10 N/mm² (BS 6319)
Bond Strength	Greater than cohesive strength of 25 N/mm ² concrete. > 1.5 MPa .

Speed of Cure

	10°C	20°C	30°C
Light traffic	24 hrs	20 hrs	16 hrs
Full traffic	72 hrs	48 hrs	36 hrs
Full chemical cure	12 days	7 days	6 days

Aftercare - Cleaning and Maintenance

Clean regularly using a single or double headed rotary scrubber drier in conjunction with a mildly alkaline detergent.

Important Note

Flowcrete's products are guaranteed against defective materials and manufacture and are sold subject to its standard Terms and Conditions of Sale, copies of which can be obtained on request.

Further Information

To ensure you are specifying a fit for purpose flooring for your project please consult our Technical Advisors on the number below or visit our website to register your interest in specifying one of the most durable floors on the market.